



A checklist of Botswana grasses

by Monicah Kabelo & Daniel Mafokate



Guide for using this checklist

- The checklist is arranged alphabetically, according to genera and species. Synonyms were taken from the main references of the PRECIS Database.
- The current genus and species names are in bold print, for example: **Eragrostis superba**. Synonyms are in italics, for example, *Aristida argentea*. Not all synonyms for a species is listed. Author names of the species are not given after the equal sign (=).
- Naturalised taxa are preceded by an asterisk, for example: ***Eragrostis barrelieri**. These are species that were introduced from outside Botswana but now occur in the wild as part of the natural flora.
- Letters after the author name(s) and separated by commas, indicate the distribution of species within Botswana. The map on page XX shows the following geographical divisions:

C—Central
CH—Chobe
GH—Ghanzi
KGL—Kgalagadi
KGT—Kgatleng

KW—Kweneng
NE—North East
NG—Ngamiland
S—Southern
SE—South East

A short key to these symbols is printed at the bottom of each page.



**A checklist
of
Botswana grasses**

A checklist of Botswana grasses

by

Monicah Kabelo & Daniel Mafokate



2004

Southern African Botanical Diversity Network Report No. 24

Recommended citation format

KABELO, M. & MAFOKATE, D. 2004. A checklist of Botswana grasses. *Southern African Botanical Diversity Network Report No. 24*. SABONET, Pretoria and Gaborone.

Produced by

Botswana National Museum
National Herbarium
Private Bag 00114
Gaborone
Botswana
Tel. (267) 39 73860/39 74616
Fax: (267) 39 11186/39 02797

Published by

Southern African Botanical Diversity Network (SABONET)
c/o National Botanical Institute, Private Bag X101, 0001, Pretoria, South Africa
and Botswana National Museum, Private Bag 00114, Gaborone, Botswana

Printed in 2004 in the Republic of South Africa by Capture Press, Pretoria, (27) 12 349-1802

ISBN 1-919976-06-X

© 2004 SABONET. All rights reserved. No part of this publication may be reproduced or transmitted in any form or by any means without the permission of the copyright holder.

Editor-in-chief: Marthina Mössmer

Scientific editor: Lyn Fish

Subeditors: Cecilia de Vos Belgraver, Hanlie van Heerden, Nicole Meyer

Text design and layout: Suzanne Olivier, Antworks Layout & Design, Pretoria (27) 72 507-2198

Cover design: Suzanne Olivier, Antworks Layout & Design

Front cover: Photos by Suzanne Olivier, Antworks. Top and bottom left: Moremi. Bottom right: Okavango.

Back cover: *Schmidtia pappophoroides* (Poaceae), photo: Dr Moffat Setshogo; *Enneapogon* sp. growing in the Botanic Garden, Botswana, photo: Dr Bruce Hargreaves; *Aristida congesta* (Poaceae), photo: Dr Moffat Setshogo.

SABONET website: www.sabonet.org

This report is a joint product of the National Herbarium of the Botswana National Museum and the Southern African Botanical Diversity Network (SABONET) and was made possible through support provided by the Global Environment Facility (GEF)/United Nations Development Programme (UNDP) and the United States Agency for International Development (USAID)/World Conservation Union-Regional Office for southern Africa (IUCN ROSA) (Plot no. 14818 Lebatlane Road, Gaborone West, Extension 6 Gaborone, Botswana), under the terms of Grant No. 690-0283-A-00-5950. The opinions expressed herein are those of the authors and do not necessarily reflect the views of USAID, the SABONET Steering Committee or SABONET National Working Groups.

IUCN
The World Conservation Union



Contents

Acknowledgements	vi
Introduction	1
Guide for using this checklist	2
Abbreviations and acronyms	3
Checklist of Botswana Grasses	4
References	14
Index	15

Acknowledgements

The National Herbarium would like to thank the Director of Botswana National Museum, Ministry of Labour and Home Affairs, for the support that they gave to the SABONET project and also for permitting Ms Kabelo to visit the SRGH Herbarium in Harare to examine Botswana grass specimens.

The two herbaria of the University of Botswana—UCBG and PSUB (Peter Smith Herbarium at Harry Oppenheimer Research Centre, Maun)—contributed a lot of information to this publication.

Many thanks to Mr Mosesane for coordinating the project and providing advice at every stage and also Dr Bruce Hargreaves, the Head of the Natural History Division of the Botswana National Museum for giving us information on grasses. Thanks also to Ms Nozipo Nobanda, Head of the National Herbarium and Botanic Gardens in Harare, for allowing Ms Kabelo to work on the Botswana grasses that are housed in SRGH.

A lot of encouragement and assistance came from:

Ludo Matenge Mogegeh, SABONET Research Officer (University of Botswana Herbarium)

Mr Christopher Chapano, SRGH, Zimbabwe

Mr Anthony Mapaura, SRGH, Zimbabwe

Mr Soul Shava, SRGH, Zimbabwe

SABONET Regional Coordinator, Dr Stefan Siebert, for the map of Botswana Districts

Enough Kadinwa for assisting with the map map showing towns, villages, and districts.

We also extend our sincere thanks to Mr Jeremia Ramontsho of Range Ecology Division in the Ministry of Agriculture for giving us a list of useful grasses of Botswana. Encouragement for doing this publication came from Mr Edwin Mitchell, a UNDP Botswana representative. Special thanks to Ms Lyn Fish for comments on the drafts and Dr Moffat Setshogo for giving us the grass list of Botswana. Many thanks to Mrs Polly Hargreaves, Dr Moffat P. Setshogo, and Suzanne Olivier for the photographs used in this publication.

Introduction

Grasses, also referred to as the Poaceae family, and specifically those types that are found in Botswana, are the main focus of this publication.

The grass family is the fifth largest plant family on earth. It consists of approximately 9,700 grass species belonging to 700 genera, of which about a tenth (967 species and 194 genera) occur in southern Africa. In Botswana about 400 species representing 94 genera have been recorded. This constitutes nearly half of the grasses found in southern Africa.

This checklist was compiled using the grass collections housed in Botswana herbaria, namely the National Herbarium (GAB) and the University of Botswana Herbarium (UCBG) in Gaborone, and the Peter Smith Herbarium (PSUB) in Maun. In some cases specimens of some species recorded for Botswana were recorded only in herbaria outside Botswana. These are housed at either the National Herbarium and Botanic Garden, Harare (SRGH), National Herbarium, Pretoria (PRE), and the Herbarium, Royal Botanic Gardens, Kew (K).

Table 1. Grasses commonly used in Botswana.

Botanical Name	Setswana Name	Use
<i>Anthephora pubescens</i>		grazing
<i>Aristida congesta</i>	Seloka	thatching huts
<i>Bothriochloa insculpta</i>		grazing
<i>Brachiaria nigropedata</i>		grazing
<i>Cenchrus ciliaris</i>	Modikangwetsi/Molekangwetsi	grazing
<i>Chloris gayana</i>		grazing
<i>Chloris virgata</i>		grazing
<i>Cymbopogon caesius</i>	Mokamakama	thatching huts
<i>Cynodon dactylon</i>	Motlho/Motlhwa	grazing
<i>Dichanthium annulatum</i> var. <i>papillosum</i>		grazing
<i>Digitaria eriantha</i>		grazing
<i>Digitaria milanjiana</i>	Namele/Moseka	grazing
<i>Echinochloa holubii</i>		grazing
<i>Eragrostis lehmanniana</i>	Rathathe	grazing
<i>Eragrostis nindensis</i>		grazing
<i>Eragrostis pallens</i>	Motsikiri	thatching huts
<i>Eragrostis rigidior</i>	Rathathe	grazing
<i>Eragrostis rotifer</i>		grazing
<i>Eragrostis superba</i>	Mogamapudi	grazing
<i>Eustachys paspaloides</i>		grazing
<i>Fingerhuthia africana</i>		grazing
<i>Megaloptachne albescens</i>		grazing
<i>Panicum coloratum</i>		grazing
<i>Panicum maximum</i>	Mhaha/Mphaga	grazing
<i>Pennisetum purpureum</i>		grazing
<i>Schmidtia pappophoroides</i>	Tshwang/Bojang jwa dipitse	grazing
<i>Setaria sphacelata</i>	Mabele/Motawaphesa	grazing
<i>Stipagrostis uniplumis</i>	Tshikitshane	thatching huts
<i>Urochloa trichopus</i>	Phoka/Sugwagaga	grazing

Guide for using this checklist

- The checklist is arranged alphabetically, according to genera and species. Synonyms were taken from the main references of the PRECIS Database.
- The current genus and species names are in bold print, for example: **Eragrostis superba**. Synonyms are in italics, for example, *Aristida argentea*. Not all synonyms for a species is listed. Author names of the species are not given after the equal sign (=).
- Naturalised taxa are preceded by an asterisk, for example: ***Eragrostis barrelieri**. These are species that were introduced from outside Botswana but now occur in the wild as part of the natural flora.
- Letters after the author name(s) and separated by commas, indicate the distribution of species within Botswana. The map below shows the following geographical divisions:

C—Central
 CH—Chobe
 GH—Ghanzi
 KGL—Kgalagadi
 KGT—Kgatleng

KW—Kweneng
 NE—North East
 NG—Ngamiland
 S—Southern
 SE—South East

A short key to these symbols is printed at the bottom of each page.



Figure 1. The floristic districts of Botswana

Abbreviations and acronyms

GAB	Botswana National Herbarium
IUCN-ROSA	World Conservation Union (Regional Office for Southern Africa)
PRECIS	National Herbarium Pretoria Computerised Information System
PSUB	Maun Herbarium, Botswana
SABONET	Southern African Botanical Diversity Network
Spmndb	Specimen Database, used by GAB, PSUB, UCBG
SRGH	National Herbarium, Harare, Zimbabwe
UCBG	University of Botswana Herbarium, Gaborone
UNDP	United Nations Development Programmes



Checklist of Botswana Grasses

ACRACHNE Wight & Arn. ex Chiov.

racemosa (Roem. & Schult.) Ohwi, NG

(*A. verticillata* (Roxb.) Chiov.)

verticillata (Roxb.) Chiov. = **A. racemosa**

ACROCERAS Stapf

macrum Stapf, NG

pilgerianum Schweick. = **Panicum pilgerianum**

ALLOTEROPSIS J.Presl.

cimicina (L.) Stapf, NG

ANDROPOGON L.

amplectens Nees = **Diheteropogon amplectens** var.

amplectens

amplectens Nees var. *catangensis* Chiov. = **Diheteropogon**

amplectens var. **catangensis**

ascinodis C.B. Clarke = **A. chinensis**

brazzae Franch., C, SE, NG

chinensis (Nees) Merr., S, C, SE, NG

(*A. ascinodis* C.B. Clarke)

(*A. schinzii* Hack.)

(*A. spanianthus* Pilg.)

dummeri Stapf = **A. schirensis**

eucomus Nees, NG, CH, SE, S, C

fastigiatus Sw., C, SE, NG, CH

(*Diectomis fastigiata* (Sw.) Kunth)

gayanus Kunth var. **polycladus** (Hack.) Clayton, C, SE, NG

(*A. gayanus* Kunth var. *squamulatus* (Hochst.) Stapf)

gayanus Kunth var. *squamulatus* (Hochst.) Stapf =

A. gayanus var. **polycladus**

hirtus L. = **Hyparrhenia hirta**

hirtus L. var. *podotrichus* (Hochst.) Hack. = **Hyparrhenia**

hirta

huillensis Rendle, C, SE, NG

laxatus Stapf, C, SE, NG

podotrichus Hochst. = **Hyparrhenia hirta**

schinzii Hack. = **A. chinensis**

schirensis A. Rich., C, SE, NG

(*A. dummeri* Stapf)

(*A. schirensis* A. Rich. var. *angustifolius* Stapf)

schirensis A. Rich. var. *angustifolius* Stapf = **A. schirensis**

spanianthus Pilg. = **A. chinensis**

ANTHEPHORA Schreb.

angustifolia Gooss. = **A. argentea**

argentea Gooss., S, KGL, SE

(*A. angustifolia* Gooss.)

pubescens Nees, C, KGL, S, GH, NG

(*A. ramosa* Gooss.)

ramosa Gooss. = **A. pubescens**

schinzii Hack., KGL, SE

ARISTIDA L.

adscensionis L., KGL, SE, C, KW, GH, S, CH, NG

(*A. adscensionis* L. subsp. *guineensis* (Trin. & Rupr.) Henrard.)

(*A. curvata* (Nees) T. Durand & Schinz)

(*A. submucronata* Schumach.)

adscensionis L. subsp. *guineensis* (Trin. & Rupr.) Henrard. =

A. adscensionis

aequiglumis Hack., KGL, SE, C, KW, GH, S, CH, NG

alopecuroides Hack. = **A. congesta** subsp. **congesta**

amabilis Schweick. = **Stipagrostis amabilis**

andoniensis Henrard = **A. rhiniochloa**

angolensis C.E. Hubb. = **Sartida angolensis**

argentea Schweick. = **A. mollissima** subsp. **argentea**

barbicollis Trin. & Rupr. = **A. congesta** subsp. **barbicollis**

bipartita (Nees) Trin. & Rupr., KGL, SE, C, KW, GH, S, CH, NG

canescens Henrard subsp. **canescens**, KGL, SE, C, KW, GH, S, CH, NG

ciliata Desf. = **Stipagrostis ciliata** var. **capensis**

ciliata Desf. var. *capensis* Trin. & Rupr. = **Stipagrostis ciliata** var. **capensis**

ciliata Desf. var. *pectinata* Henrard = **Stipagrostis ciliata** var.

capensis

ciliata Desf. var. *tricholaena* Hack. = **Stipagrostis ciliata** var.

capensis

ciliata Desf. var. *villosa* Hack. = **Stipagrostis ciliata** var.

capensis

congesta Roem. & Schult. subsp. **barbicollis** (Trin. & Rupr.)

De Winter, KGT, KGL, SE, C, KW, GH, S, CH, NG

(*A. barbicollis* Trin. & Rupr.)

barbicollis Trin. & Rupr. = **A. congesta** subsp. **barbicollis**

congesta Roem. & Schult. subsp. **congesta**, KGL, SE, C,

KW, GH, S, CH, NG

(*A. alopecuroides* Hack.)

(*A. longicauda* Hack.)

curvata (Nees) T. Durand & Schinz = **A. adscensionis**

diffusa Trin. subsp. **burkei** (Stapf) Melderis, NG

(*A. diffusa* Trin. var. *burkei* (Stapf) Schweick.)

diffusa Trin. var. *burkei* (Stapf) Schweick. = **A. diffusa** subsp.

burkei

effusa Henrard, KGL, SE, C, KW, GH, S, CH, NG

fontismagni Schweick. = **A. stipoides**

graciliflora Pilg. = **A. stipitata** subsp. **graciliflora**

gracilior Pilg. var. *gracilior* = **Stipagrostis hirtigluma** subsp.

patula

hirtigluma Trin. & Rupr. = **Stipagrostis hirtigluma** subsp.

hirtigluma

hordeacea Kunth, KGL, SE, C, KW, GH, S, CH, NG

hubbardiana Schweick., KGL, SE, C, KW, GH, S, CH, NG

jucunda Schweick. = **Sartida jucunda**

junciformis Trin. & Rupr. subsp. **junciformis**, SE

junciformis Trin. & Rupr. subsp. **welwitschii** (Rendle)

Melderis, NG

longicauda Hack. = **A. congesta** subsp. **congesta**

meridionalis Henrard, NG, KGL, KW, C

mollissima Pilg. subsp. **argentea** (Schweick.) Melderis, KGL,

SE, C, KW, GH, S, CH, NG

(*A. argentea* Schweick.)

mollissima Pilg. subsp. **mollissima**, NG, KW, KGL

namaquensis (Nees) Trin. & Rupr. = **Stipagrostis**

namaquensis

obtusata Delile = **Stipagrostis obtusata**

pilgeri Henrard, KGL, SE, C, KW, GH, S, CH, NG

rhiniochloa Hochst., KGL, SE, C, KW, GH, S, CH, NG

(*A. andoniensis* Henrard)

scabrivalvis Hack. subsp. **contracta** (De Winter) Melderis, CH

scabrivalvis Hack. subsp. **scabrivalvis**, KGL, SE, C, KW, GH, S, CH, NG

spectabilis Hack., KGL, SE, C, KW, GH, S, CH, NG

stipitata Hack. subsp. **graciliflora** (Pilg.) Melderis, KGL, SE, C, KW, GH, S, CH, NG

(*A. graciliflora* Pilg.)

(*A. stipitata* Hack. var. *graciliflora* (Pilg.) De Winter)

(*A. vinosa* Henrard)

stipitata Hack. subsp. **robusta** (Stent & J.M. Rattray)

Melderis, GH, NG, CH

stipitata Hack. subsp. **spicata** (De Winter) Melderis, KGL, NG

stipitata Hack. subsp. **stipitata**, NG, KGL, GH

stipitata Hack. var. *graciliflora* (Pilg.) De Winter = **A.**

stipitata subsp. **graciliflora**

stipoides Lam., KGL, SE, C, KW, GH, S, CH, NG

(*A. fontismagni* Schweick.)

submucronata Schumach. = **A. adscensionis**

uniplumis Licht. var. *neesii* Trin. & Rupr. = **Stipagrostis**

uniplumis var. **neesii**

uniplumis Licht. var. *pearsonii* Henrard = **Stipagrostis**

uniplumis var. **uniplumis**

uniplumis Licht. var. *uniplumis* = **Stipagrostis uniplumis** var.

uniplumis

vestita Thunb., C

(*Chaetaria vestita* (Thunb.) P.Beauv.)

vinosa Henrard = **A. stipitata** subsp. **graciliflora**

wildii Melderis, KGL, SE, C, KW, GH, S, CH, NG

ARUNDO L.

***donax** L., SE, C

ASTHENATHERUM Nevski

forskallii auct. non (Vahl) Nevski = **Centropodia glauca**

glaucum (Nees) Nevski = **Centropodia glauca**

AVENASTRUM

flabellatum Peter = **Bewsia biflora**

BEWSIA Gooss.

biflora (Hack.) Gooss., NG

(*Diplachne biflora* Hack.)

(*Diplachne biflora* Hack. var. *buchananii* Stapf.)

(*Avenastrum flabellatum* Peter.)

BOTHRIOCHLOA Kuntze

bladhii (Retz.) S.T.Blake, SE, C, NG

(*B. glabra* (Roxb.) A.Camus)

(*B. insculpta* (A.Rich.) A.Camus var. *vegetior* (Hack.) C.E.Hubb.)

glabra (Roxb.) A.Camus = **B. bladhii**

insculpta (A.Rich.) A.Camus var. *vegetior* (Hack.) C.E.Hubb.

= **B. bladhii**

insculpta (A.Rich.) A.Camus, SE, C

(*B. pertusa* auct. non (L.) A.Camus)

pertusa auct. non (L.) A.Camus = **B. insculpta**

radicans (Lehm.) A.Camus, KGL, C, SE, NG

BRACHIARIA (Trin.) Griseb.

arrecta (T.Durand & Schinz) Stent, NG, KL, SE, KW, S, GH, CH

(*B. latifolia* Stapf)

brizantha (A.Rich.) Stapf, NG, SE, KW, S

deflexa (Schumach.) C.E.Hubb. ex Robyns, NG, NE, C, SE, GH

(*Pseudobrachiaria deflexa* (Schumach.) Launert)

dictyoneura (Fig. & De Not.) Stapf, KGL, SE, KW, S, GH, CH

dura Stapf, NG, CH, C, KW

eruciformis (J.E.Smith) Griseb., NG, SE, KW, S

glomerata (Hack.) A.Camus, NG, SE, KW, S

grossa Stapf, NG, SE, KW, S

humidicola (Rendle) Schweick., NG, SE, KW, S, CH

latifolia Stapf = **B. arrecta**

marlothii (Hack.) Stent, NG, KGL, SE, KW, C

nigropedata (Ficahlo & Hiern) Stapf, NG, C, CH, GH, S

serrata (Thunb.) Stapf, NG

(*B. serrata* var. *gossypina* (A.Rich.) Stapf.)

serrata var. *gossypina* (A.Rich.) Stapf. = **B. serrata**

xantholeuca (Schinz) Stapf, NG, C

BRACHYACHNE (Benth.) Stapf

chrysolepsis C.E.Hubb. = **B. patentiflora**

patentiflora (Stent & J.M.Rattray) C.E.Hubb., NG

(*B. chrysolepsis* C.E.Hubb.)

CENCHRUS L.

***biflorus** Roxb, C, GH, KGL, SE, NG, NE

***brownii** Roem. & Schult., C, GH, KL, SE, NG, NE

ciliaris L., S, C, GH, KGL, SE, NG, NE

CENTROPODIA Rchb.

glauca (Nees) Cope, KGL, NG, CH

(*Asthenatherum forskalii* auct. non (Vahl) Nevski)

(*Asthenatherum glaucum* (Nees) Nevski)

(*Danthonia forskallii* auct. non (Vahl) Nevski)

(*Danthonia glauca* Nees)

CHAETARIA P.Beauv.

vestita (Thunb.) P.Beauv. = **Aristida vestita**

CHLORIS Sw.

gayana Kunth, NG, C, CH

myriostachya Hochst. = **C. roxburghiana**

pycnothrix Trin., NG, KGL, KW, SE, C

roxburghiana Schult., C, NG, KGL, KW, SE

(*C. myriostachya* Hochst.)

virgata Sw., C, KGL, GH, NG, SE

CHRYSOPOGON Trin.

montanus Trin. var. *tremulus* (Hack.) Stapf = **C. serrulatus**

nigritanus (Benth.) Veldk.

(*Vetiveria nigritana* (Benth.) Stapf)

serrulatus Trin., SE, KW, NE

(*C. montanus* Trin. var. *tremulus* (Hack.) Stapf)

COELACHYRUM Hochst. & Nees

yemenicum (Schweinf.) S.M. Phillips, KGL, C

(*Cypholepis yemenica* (Schweinf.) Chiov.)

CRASPEDORHACHIS Benth.

- africana** Benth., NG
rhodesiana Rendle, NG
sarmentosa (Hack.) Pilg. = **Willkommia sarmentosa**

CYMBOPOGON Spreng.

- afronardus* Stapf = **C. nardus**
caesius (Hook. & Arn.) Stapf subsp. **caesius**, NG, C, GH, NG, KW, NE, KGL
 (*C. excavatus* (Hochst.) Stapf ex Burtt Davy)
caesius (Hook. & Arn.) Stapf subsp. **giganteus** (Chiov.) Sales, NG
 (*C. giganteus* Chiov.)
 ***citratu**s (DC.) Stapf, SE, KGL, NG
dieterleniae Stapf ex E.Phillips, SE, KGL, NG
excavatus (Hochst.) Stapf ex Burtt Davy = **C. caesius** subsp. **caesius**
giganteus Chiov. = **C. caesius** subsp. **giganteus**
nardus (L.) Rendle, NG, SE, KGL
 (*C. afronardus* Stapf)
 (*C. nardus* (L.) Rendle var. *confertiflorus* (Steud.) Bor)
 (*C. validus* (Stapf) Stapf ex Burtt Davy)
nardus (L.) Rendle var. *confertiflorus* (Steud.) Bor = **C. nardus**
plurinodis (Stapf) Stapf ex Burtt Davy = **C. pospischilii**
pospischilii (K.Schum.) C.E.Hubb., C, GH, SE, KG, KW, KGL NG
 (*C. plurinodis* (Stapf) Stapf ex Burtt Davy)
validus (Stapf) Stapf ex Burtt Davy = **C. nardus**

CYMBOSETARIA Schweick.

- sagittifolia* (A.Rich.) Schweick. = **Setaria sagittifolia**

CYNODON Rich.

- ***aethiopicus** Clayton & Harlan, NG, SE, C
dactylon (L.) Pers., SE, KGT, C, NG, GH
incompletus Nees, SE, KGT, C, NG, GH
 ***nlemfuensis** Vanderyst, SE, KGT, C, NG, GH
transvaalensis Burtt Davy, SE, KGT, C, NG, GH

CYPHOLEPIS Chiov.

- yemenica* (Schweinf.) Chiov. = **Coelachyrum yemenicum**

DACTYLOCTENIUM Willd.

- aegyptium** (L.) Willd., C, NG, GH, SE, KGL, NE
geminatum Hack., C, NG, GH, SE, KGL, NE
giganteum Fisher & Schweick., GH, NG, C, KGL

DANTHONIA DC

- forskallii* auct. non (Vahl) Nevski = **Centropodia glauca**
glauca Nees = **Centropodia glauca**

DANTHONIOPSIS Stapf

- dinteri** (Pilg.) C.E.Hubb., NG

DIANDROCHLOA De Winter

- namaquensis* (Nees) De Winter = **Eragrostis japonica**
pusilla (Hack.) De Winter = **Eragrostis pusilla**

DICHANTHIUM Willemet

- annulatum** (Forssk.) Stapf var. **annulatum**, SE, CH
annulatum (Forssk.) Stapf var. **papillosum** (Hochst. ex

A.Rich.) de Wet & Harlan, SE, C, NG, KGL

- (*D. papillosum* (Hochst. ex A.Rich.) Stapf)
papillosum (Hochst. ex A.Rich.) Stapf = **D. annulatum** var.
papillosum
 ***sericeum** Stapf, SE

DIECTOMIS Kunth

- fastigiata* (Sw.) Kunth = **Andropogon fastigiatus**

DIGITARIA Haller

- abyssinica* auct. non (A.Rich.) Stapf = **D. scalarum**
acuminatissima Stapf, NG, KGL, SE, CH, C, KW
 (*D. acuminatissima* Stapf subsp. *inermis* Goetgh.)
acuminatissima Stapf subsp. *inermis* Goetgh. = **D. acuminatissima**
adscendens (Kunth) Henrard = **D. ciliaris**
bechuanica (Stent) Henrard = **D. eriantha**
borbonica Desv. = **D. nuda**
brazzae (Franch.) Stapf, CH, NG
ciliaris (Retz.) Koeler, NG, C
 (*D. adscendens* (Kunth) Henrard)
 (*D. marginata* Link)
debilis (Desf.) Willd., NG
decumbens Stent = **D. eriantha**
dinteri Henrard = **D. eriantha**
eriantha Steud., NG, GH, C, KGL
 (*D. bechuanica* (Stent) Henrard)
 (*D. decumbens* Stent)
 (*D. dinteri* Henrard)
 (*D. eriantha* Steud. subsp. *pentzii* (Stent) Kok)
 (*D. eriantha* Steud. subsp. *stolonifera* (Stapf) Kok)
 (*D. eriantha* Steud. subsp. *transvaalensis* Kok)
 (*D. eriantha* Steud. var. *stolonifera* Stapf)
 (*D. geniculata* Stent)
 (*D. glauca* sensu Stent, non A.Camus)
 (*D. pentzii* Stent)
 (*D. pentzii* Stent var. *stolonifera* (Stapf) Henrard)
 (*D. setivalva* Stent)
 (*D. smutsii* Stent)
 (*D. stentiana* Henrard)
 (*D. valida* Stent)
 (*D. valida* Stent var. *glauca* Stent)
eriantha Steud. subsp. *pentzii* (Stent) Kok = **D. eriantha**
eriantha Steud. subsp. *stolonifera* (Stapf) Kok = **D. eriantha**
eriantha Steud. subsp. *transvaalensis* Kok = **D. eriantha**
eriantha Steud. var. *stolonifera* Stapf = **D. eriantha**
eyesii C.E.Hubb., NG
gayana (Kunth) Stapf, NG
geniculata Stent = **D. eriantha**
glauca sensu Stent, non A.Camus = **D. eriantha**
littoralis sensu Stent non Salisb. = **D. natalensis**
littoralis sensu Stent, non Salisb. var. *prostata* Stent = **D. natalensis**
longiflora (Retz.) Pers., NG
macroglossa Henrard = **D. natalensis**
macroglossa Henrard var. *prostata* (Stent) Henrard = **D. natalensis**
maniculata Stapf, C, CH, NG
marginata Link = **D. ciliaris**
milanjiana (Rendle) Stapf, NG, C, GH, KGL, SE, CH
natalensis Stent, KW

(*D. littoralis* sensu Stent, non Salisb.)
 (*D. littoralis* sensu Stent, non Salisb. var. *prostrata* Stent)
 (*D. macroglossa* Henrard)
 (*D. macroglossa* Henrard var. *prostrata* (Stent) Henrard)
 (*D. natalensis* Stent subsp. *stentiana* Henrard)
 (*D. rigida* Stent)
natalensis Stent subsp. *stentiana* Henrard = **D. natalensis**
 ***nuda** Schumach, C, NE
 (*D. borbonica* Desv.)
pentzii Stent = **D. eriantha**
pentzii Stent var. *stolonifera* (Stapf) Henrard = **D. eriantha**
perrottetii (Kunth) Stapf, NE, CH, NG
polevansii Stent = **D. seriata**
remotigluma (De Winter) Clayton, NG
 (*Digitariella remotigluma* De Winter)
rigida Stent = **D. natalensis**
 ***sanguinalis** (L.) Scop., NG, C
scalarum (Schweinf.) Chiov., KW, NG, KGL, SE, CH, C
 (*D. abyssinica* auct. non (A.Rich.) Stapf)
 (*D. vestita* Fig. & De Not. var. *scalarum* (Schweinf.) Henrard)
seriata Stapf, NG
 (*D. polevansii* Stent)
setivalva Stent = **D. eriantha**
smutsii Stent = **D. eriantha**
stentiana Henrard = **D. eriantha**
valida Stent = **D. eriantha**
valida Stent var. *glauca* Stent = **D. eriantha**
velutina (Forssk.) P.Beauv., NG
 (*D. zeyheri* (Nees) Henrard)
vestita Fig. & De Not. var. *scalarum* (Schweinf.) Henrard =
D. scalarum
zeyheri (Nees) Henrard = **D. velutina**

DIGITARIALLA De Winter

remotigluma De Winter = **Digitaria remotigluma**

DIHETEROPOGON (Hack.) Stapf

amplectens (Nees) Clayton var. **amplectens**, SE, S [housed
 K, PRE]
 (*Andropogon amplectens* Nees)
amplectens (Nees) Clayton var. **catangensis** (Chiov.)
 Clayton, CH, SE, S [housed K, PRE]
 (*Andropogon amplectens* Nees var. *catangensis* Chiov.)
filifolius (Nees) Clayton, C, SE, NG

DINEBRA Jacq.

retroflexa (Vahl) Panz. var. **condensata** S.M.Phillips, C,
 KGT, CH

DIPLACHNE P.Beauv.

biflora Hack. = **Bewsia biflora**
biflora Hack. var. *buchananii* Stapf = **Bewsia biflora**
cinerea Hack. = **Odyssea paucinervis**
eleusine Nees = **Leptochloa eleusine**
fusca (L.) P.Beauv. ex Roem. & Schult. = **Leptochloa fusca**
gigantea Launert = **Leptochloa gigantea**
malabrica (L.) Merr. sensu Adamson = **Leptochloa fusca**

DOLICHOCHAETE (C.E.Hubb.) J.B.Phipps

longispiculata (C.E.Hubb.) J.B.Phipps = **Tristachya**
nodiglumis

nodiglumis (K.Schum.) J.B.Phipps = **Tristachya nodiglumis**
rehmannii (Hack.) J.B.Phipps var. *pilosa* (C.E.Hubb.)
 J.B.Phipps = **Tristachya rehmannii**

ECHINOCHLOA P.Beauv.

aristifera (Peter) Robyns & Tournay = **E. haploclada**
colona (L.) Link, C, NG, CH, SE, S, NE, GH
crus-galli (L.) P.Beauv., C, NG
crus-pavonis (Kunth) Schult., NG
haploclada (Stapf) Stapf, NG
 (*E. aristifera* (Peter) Robyns & Tournay)
holubii (Stapf) Stapf, C, KGL, KW
jubata Stapf, NG, C, CH
pyramidalis (Lam.) Hitchc. & Chase, C, CH, NG, KW
stagnina (Retz.) P.Beauv., NG, C, CH
ugandensis Snowden & C.E.Hubb., NG

ELEUSINE Gaertn.

africana Kenn.-O'Byrne = **E. coracana** subsp. **africana**
coracana (L.) Gaertn. subsp. **africana** (Kenn.-O'Byrne) Hilu
 & de Wet., NG, SE, KW, S, KGL, C
 (*E. africana* Kenn.-O'Byrne)
 (*E. indica* (L.) Gaertn. subsp. *africana* (Kenn.-O'Byrne)
 S.M.Phillips)
indica (L.) Gaertn. subsp. *africana* = **E. coracana** subsp.
africana
indica (L.) Gaertn., C, NG

ELIONURUS Kunth ex Willd.

argenteus Nees = **E. muticus**
glaber E.Phillips = **E. muticus**
glaber E.Phillips var. *villosus* E.Phillips = **E. muticus**
muticus (Spreng.) Kunth, NG, KW, SE, KGL, C, CH
 (*E. argenteus* Nees)
 (*E. glaber* E.Phillips)
 (*E. glaber* E.Phillips var. *villosus* E.Phillips)
 (*E. pretoriensis* E.Phillips)
pretoriensis E.Phillips = **E. muticus**
tripsacoides Willd., NG

ELYMANDRA Stapf

grallata (Stapf) Clayton, NG, CH

ELYTROPHORUS P.Beauv.

globularis Hack., NG
spicatus (Willd.) A.Camus, NG

ENNEAPOGON Desv. ex P.Beauv.

brachystachyus (Jaub. & Spach) Stapf = **E. desvauxii**
cenchroides (Roem. & Schult.) C.E.Hubb., NG, C, SE, KW,
 KGL, NE, GH
desvauxii P.Beauv., KGL, C, SE, GH, NG, KW
 (*E. brachystachyus* (Jaub. & Spach) Stapf)
filifolius (Pilg.) Stapf ex Garab. = **E. scoparius**
pretoriensis Stent, S
scaber Lehm., NG, KGL
scoparius Stapf, SE, C, NG, KW
 (*E. filifolius* (Pilg.) Stapf ex Garab.)

ENTEROPOGON Nees

macrostachyus (A.Rich.) Benth., C, NG, SE

(*E. simplex* (Schumach.) A.Chev.)

rupestris (J.A.Schmidt) A.Chev, NG, C

ENTOLASIA Stapf

imbricata Stapf, NG

ERAGROSTIS Wolf

abyssinica (Jacq.) Link = **E. tef**

aethiopica Chiov., NG, C

amabilis (L.) Hook. & Arn., NG, CH, NE

(*E. tenella* (L.) Roem. & Schult.)

annulata Rendle ex Scott-Elliot, KGL [housed at PRE]

aspera (Jacq.) Nees, C, NG, NE, CH

atherstonei Stapf = **E. trichophora**

atrovirens auct. non (Desf.) Trin. ex Steud. = **E. inamoena**

barbinodis Hack., NG

***barrelieri** Daveau, NG

bergiana (Kunth) Trin., GH, KGL

bicolor Nees, KGL, KW, GH, C

biflora Hack. ex Schinz, C, KGL, KW, GH, NE, KGT

brizantha Nees, NG, KGL

chapelieri (Kunth) Nees, C

cilianensis (All.) Vignolo ex Janch., C, NG, KGL

ciliaris (L.) R.Br., NG [housed at K]

cimicina Launert, NG

curvula (Schrud.) Nees, C, KGL, KW

(*E. robusta* Stent)

cylindriflora Hochst., NG

(*E. horizontalis* Peter)

denudata Hack. = **E. nindensis**

dinteri Stapf, NG

echinochloidea Stapf, NG, C, KW, KGL, GH,

friesii Pilg., CH

gangetica (Roxb.) Steud., NG, NE

glandulosipedata De Winter, CH, C, KGL, GH

gummiflua Nees, C, SE

habrantha Rendle, NG, CH

henrardii Jansen = **E. trichophora**

heteromera Stapf, SE, KGL, NG

hierniana Rendle, SE, S

(*E. uniglumis* Hack.)

homomalla Nees, NG, KGL, GH

(*E. hygrophila* C.E.Hubb. & Schweick.)

horizontalis Peter = **E. cylindriflora**

hygrophila C.E.Hubb. & Schweick. = **E. homomalla**

inamoena K. Schum., NG, C

(*E. atrovirens* auct. non (Desf.) Trin. ex Steud.)

japonica (Thunb.) Trin., NG, SE

(*Diandrochloa namaquensis* (Nees) De Winter)

(*E. namaquensis* Nees ex Schrad.)

jeffreysii Hack., NG

laevissima Hack., NG, KGL, C

lappula Nees, NG, CH

(*E. lappula* Nees var. *divaricata* Stapf)

lappula Nees var. *divaricata* Stapf = **E. lappula**

lehmanniana Nees var. **chaunantha** (Pilg.) De Winter, SE

lehmanniana Nees var. **lehmanniana**, KGL, C, NE

leptotricha Cope, NG

macrochlamys Pilg. var. **wilmaniae** (C.E.Hubb. &

Schweick.) De Winter, NG, KGL

margaritacea Stapf = **E. rotifer**

membranacea Hack. ex Schinz, NG

micrantha Hack., NG

mildbraedii Pilg., NG [housed at PRE]

namaquensis Nees ex Schrad. = **E. japonica**

nindensis Ficalho & Hiern, SE, KW, C, NG, CH, KGL, GH

(*E. denudata* Hack.)

omahekensis De Winter, NG

pallens Hack., NG, KGL, C, KW, GH, CH, NE, KGT

patentipilosa Hack., NG

(*E. pseudosclerantha* Chiov.)

phyllacantha Cope, GH, KGL

pilgeriana Dinter ex Pilg., NG

pilosa (L.) P. Beauv., SE, NG, C, CH

plana Nees, NG, S

porosa Nees, KGL, C, SE, NG, KW, NE, GH

procumbens Nees, SE

pseudosclerantha Chiov. = **E. patentipilosa**

pusilla Hack., SE, NG

(*Diandrochloa pusilla* (Hack.) De Winter)

rigidior Pilg., SE, NG, C, KW, KGL, NE, CH

robusta Stent = **E. curvula**

rogersii C.E.Hubb., CH

rotifer Rendle, C, NG, KGL, SE, GH, NE

(*E. margaritacea* Stapf)

sarmentosa (Thunb.) Trin., NG, CH

stapfii De Winter, SE, KGL

subglandulosa Cope, NG

superba Peyr., NG, C, NE, KW, KGL, KGT, CH

***tef** (Zucc.) Trotter, NG, KW, S, C, KGL, GH, CH, SE, KGT

(*E. abyssinica* (Jacq.) Link)

tenella (L.) Roem. & Schult. = **E. amabilis**

trichophora Coss. & Durieu, NE, C, NG, SE, KW

(*E. atherstonei* Stapf)

(*E. henrardii* Jansen)

truncata Hack., KGL

uniglumis Hack. = **E. hierniana**

viscosa (Retz.) Trin., NG, SE, C, CH, NE, GH, KGL

ERIOCHLOA Kunth

borumensis Hack. = **E. meyeriana** subsp. **meyeriana**

fatmensis (Hochst. & Steud.) Clayton, C, SE

(*E. nubica* (Steud.) Thell.)

macclounii Stapf, NG, CH

meyeriana (Nees) Pilg. subsp. **meyeriana**, NG, C

(*E. borumensis* Hack.)

(*Panicum meyerianum* Nees var. *meyerianum*)

nubica (Steud.) Thell. = **E. fatmensis**

procera (Retz.) C.E.Hubb., C

ERIOCHRYSIS P.Beauv.

brachypogon (Stapf) Stapf, NG

pallida Munro, NG

EULALIA Kunth

aurea (Bory) Kunth, NG

(*E. geniculata* Stapf)

geniculata Stapf. = **E. aurea**

EUSTACHYS Desv.

paspaloides (Vahl.) Lanza & Mattei, SE, C, KW

FINGERHUTHIA Nees**africana** Lehm., S, C, SE, KW, NG**HACKELOCHLOA** Kuntze**granularis** (L.) Kuntze, NG, CH**HEMARTHRIA** R.Br.**altissima** (Poir.) Stapf & C.E.Hubb., NG, C, CH, SE*(H. fasciculata* (Lam.) Kunth)*(Rottboellia compressa* L.f. var. *fasciculata* (Lam.) Hack.)*fasciculata* (Lam.) Kunth = **H. altissima****?natans** Stapf, NG**HETEROPOGON** Pers.**contortus** (L.) Roem. & Schult., CH, KGL, NG, C, KW, GH, SE**melanocarpus** (Elliott) Benth., NG, CH,**HYPARRHENIA** E.Fourn.*altissima* Stapf = **H. rufa** var. **rufa****anamesa** Clayton, C*buchananii* (Stapf) Stapf ex Stent = **H. poecilotricha****dichroa** (Steud.) Stapf, NG*(H. fastigiata* Robyns)*dissoluta* (Nees ex Steud.) C.E.Hubb. = **Hyperthelia****dissoluta***fastigiata* Robyns = **H. dichroa****filipendula** (Hochst.) Stapf var. **filipendula**, C, SE, CH**filipendula** (Hochst.) Stapf var. **pilosa** (Hochst.) Stapf, C**hirta** (L.) Stapf, C, SE, NG, S*(Andropogon hirtus* L.)*(Andropogon hirtus* L. var. *podotrichus* (Hochst.) Hack.)*(Andropogon podotrichus* Hochst.)*(H. hirta* (L.) Stapf var. *podotricha* (Hochst.) Pic. Serm.)*hirta* (L.) Stapf. var. *podotricha* (Hochst.) Pic. Serm. =**H. hirta****nyassae** (Rendle) Stapf, NG*(H. vulpina* Stapf)**poecilotricha** (Hack.) Stapf, NG*(H. buchananii* (Stapf) Stapf ex Stent)**rudis** Stapf, NG**rufa** (Nees) Stapf var. **rufa**, NG, CH, NG, SE, KW, KGL*(H. altissima* Stapf.)*vulpina* Stapf = **H. nyassae****HYPERTHELIA** Clayton**dissoluta** (Nees ex Steud.) Clayton, SE, C, NG*(Hyparrhenia dissoluta* (Nees ex Steud.) C.E.Hubb.)**IMPERATA** Cirillo*arundinacea* Cirillo var. *africana* Andersson = **I. cylindrica***arundinacea* Cirillo var. *thunbergii* (Retz.) Stapf = **I.****cylindrica****cylindrica** (L.) Raeusch., NG*(I. arundinacea* Cirillo var. *africana* Andersson)*(I. arundinacea* Cirillo var. *thunbergii* (Retz.) Stapf)**ISCHAEMUM** L.**afrum** (J.F.Gmel.) Dandy, C, SE, CH*(I. brachyatherum* (Hochst.) Fenzl ex Hack.)*(I. glaucostachyum* Stapf)*arcuatum* (Nees) Stapf = **I. fasciculatum***brachyatherum* (Hochst.) Fenzl ex Hack. = **I. afrum****fasciculatum** Brongn., NG, CH*(I. arcuatum* (Nees) Stapf)*glaucostachyum* Stapf = **I. afrum****LEERSIA** Sw.**denudata** Launert, NG [housed at SRGH]**friesii** Melderis, NG**hexandra** Sw., NG, C**tisserantii** (A.Chev.) Launert, NG**LEPTOCARYDION** Stapf**vulpiastrum** (De Not.) Stapf, NG, CH, NE**LEPTOCHLOA** P.Beauv.**chinensis** (L.) Nees, SE, C**eleusine** (Nees) Cope & N.Snow, C*(Diplachne eleusine* Nees)**fusca** (L.) Kunth, NG, C, SE, KW, KG*(Diplachne fusca* (L.) P.Beauv. ex Roem. & Schult.)*(Diplachne malabarica* (L.) Merr. sensu Adamson)**gigantea** (Launert) Cope & N.Snow, NG*(Diplachne gigantea* Launert)**panicea** Ohwi, C, NE, SE**uniflora** A.Rich., CH [housed at K]**LINTONIA** Stapf**nutans** Stapf, C**LOUDETIA** Hochst. ex Steud.*acuminata* (Stapf) C.E.Hubb. = **L. flavida****flavida** (Stapf) C.E.Hubb., NG, CH, C*(L. acuminata* (Stapf) C.E.Hubb.)*superba* De Not. = **Tristachya superba****MEGALOPROTACHNE** C.E.Hubb.**albescens** C.E.Hubb., C, GH, NG, KGL, KW, KGT*(M. glabrescens* Roiv.)*glabrescens* Roiv. = **M. albescens****MELINIS** P.Beauv.**kallimorpha** (Clayton) Zizka, NG*(Rhynchelytrum kallimorphon* Clayton)**longiseta** (A.Rich.) Zizka subsp. **bellespicata** (Rendle) Zizka,

NG, CH, C

(Rhynchelytrum bellespicatum (Rendle) Stapf & C.E.Hubb.)**nerviglumis** (Franch.) Zizka, CH, S, SE*(Rhynchelytrum nerviglume* (Franch.) Chiov.)*(Rhynchelytrum nyassanum* (Mez) Stapf & C.E.Hubb.)*(Rhynchelytrum ramosum* Stapf & C.E.Hubb.)*(Rhynchelytrum rhodesianum* (Rendle) Stapf & C.E.Hubb.)*(Rhynchelytrum setifolium* (Stapf) Chiov.)**repens** (Wild.) Zizka subsp. **grandiflora** (Hochst.) Zizka, C,

NG, KGL, KW, GH

(Rhynchelytrum brevopilum (Hack.) Chiov.)*(Rhynchelytrum costatum* Stapf & C.E.Hubb.)*(Rhynchelytrum grandiflorum* Hochst.)*(Rhynchelytrum suberostratum* Stapf & C.E.Hubb.)*(Rhynchelytrum villosum* (Parl.) Chiov.)**repens** (Willd.) Zizka subsp. **repens**, NG, CH, C, SE,

- KGL, GH
(*Rhynchelytrum repens* (Willd.) C.E.Hubb.)
- MICROCHLOA** R.Br.
caffra Nees, C, SE, S
indica (L.f.) P.Beauv., NG
(*M. setacea* (Roxb.) R.Br.)
kunthii Desv., C, SE, CH
setacea (Roxb.) R.Br. = **M. indica**
- MISCANTHIDIUM** Stapf
capensis Nees var. *capensis* = **Miscanthus capensis**
capensis Nees var. *villosa* Stapf = **Miscanthus capensis**
erectum Stent = **Miscanthus capensis**
junceum (Stapf) Stapf = **Miscanthus junceus**
sorghum Stent = **Miscanthus capensis**
teretifolium (Stapf) Stapf = **Miscanthus junceus**
- MISCANTHUS** Andersson
capensis (Nees) Andersson, KW
(*M. sorghum* (Nees) Pilg.)
(*Miscanthidium capensis* Nees var. *capensis*)
(*Miscanthidium capensis* Nees var. *villosa* Stapf)
(*Miscanthidium erectum* Stent)
(*Miscanthidium sorghum* Stent)
junceus (Stapf) Pilg., NG
(*Miscanthidium junceum* (Stapf) Stapf)
(*Miscanthidium teretifolium* (Stapf) Stapf)
sorghum (Nees) Pilg. = **M. capensis**
- MONOCYMBIUM** Stapf
ceresiiforme (Nees) Stapf, NG
- ODYSSEA** Stapf
paucinervis (Nees) Stapf, C, NG
(*Diplachne cinerea* Hack.)
- OPLISMENUS** P.Beauv.
burmannii (Retz.) P.Beauv., NG
hirtellus (L.) P.Beauv., NG [housed at SRGH]
undulatifolius (Ard.) Roem. & Schult., NG
- OROPETIUM** Trin.
capense Stapf, C, SE, GH
- ORYZAL.**
barthii A.Chev., NG [housed at PRE]
barthii auct. non A.Chev. & Roehr. = **O. longistaminata**
longistaminata A.Chev. & Roehr., NG
(*O. barthii* auct. non A.Chev.)
- ORYZIDIUM** C.E.Hubb. & Schweick.
barnardii C.E.Hubb. & Schweick., NG, CH, KGL
- PANICUM** L.
aphanoneurum Steud. = **P. fluviicola**
arcurameum Stapf, NG, C [housed at SRGH]
atrosanguineum A.Rich., NG, C
bechuanense Bremek. & Oberm., NG, C, KW
[housed at SRGH]
coloratum L. var. **coloratum**, C, KGL, NG, SE, NE, KW
- (*P. coloratum* var. *makarikariense* Gooss.)
coloratum var. *makarikariense* Gooss. = **P. coloratum** var.
coloratum
deustum Thunb., NG, C
dregeanum Nees, CH, NE, NG
filiculme Schinz = **P. hymeniochilum**
fluviicola Steud., NG
(*P. aphanoneurum* Steud.)
funaense Vanderyst, NG
gilvum Launert, NG
(*P. laevifolium* Hack. var. *contractum* Pilg.)
graniflorum Stapf, NG [housed at SRGH]
heterostachyum Hack., NG, CH
hymeniochilum Nees, NG
(*P. filiculme* Schinz)
(*P. hymeniochilum* Nees var. *glandulosum* Nees)
hymeniochilum Nees var. *glandulosum* Nees = **P. hymeniochilum**
impeditum Launert, NG, CH, C
kalahareense Mez, KGL, KW, NG, C, SE, CH
laevifolium Hack. var. *contractum* Pilg. = **P. gilvum**
laevifolium Hack. var. *laevifolium* = **P. schinzii**
lanipes Mez, NG, KGL, GH, KW, SE
madipirensis Mez, NG
massaiense Mez, NG Bots/Namibia border, NE [housed at SRGH]
maximum Jacq., C, KGL, CH, NG, SE, KW
meyerianum Nees var. *meyerianum* = **Eriochloa meyeriana** subsp. **meyeriana**
***miliaceum** L., NG
minus Stapf = **P. stapfianum**
novemnerve Stapf, C
parvifolium Lam., NG
pilgerianum (Schweick.) Clayton, NG, SE
(*Acroceras pilgerianum* Schweick.)
(*Psilochloa pilgeriana* (Schweick.) Launert)
porphyrrhizos Steud., CH, NG
repens L., NG, C
repentellum Napper, NG
schinzii Hack., NG
(*P. laevifolium* Hack. var. *laevifolium*)
stapfianum Fourc., NG, C, GH, SE, NE
(*P. minus* Stapf)
subalbidum Kunth, NG, C
trichonode Launert & Renvoize, NG, C, CH, KGL
- PASPALIDIUM** Stapf
obtusifolium (Delile) N.D.Simpson, CH, NG, C
(*P. platyrrhachis* C.E.Hubb.)
platyrrhachis C.E.Hubb. = **P. obtusifolium**
- PASPALUM** L.
auriculatum J.Presl & C.Presl = **P. scrobiculatum**
commersonii Lam. = **P. scrobiculatum**
orbiculare G.Forst. = **P. scrobiculatum**
polystachyum R.Br. = **P. scrobiculatum**
scrobiculatum L., C, NG, SE, CH
(*P. auriculatum* J.Presl & C.Presl)
(*P. commersonii* Lam.)
(*P. orbiculare* G.Forst.)
(*P. polystachyum* R.Br.)

PENNISETUM Rich.

- albicauda* Stapf & C.E.Hubb. = **P. glaucum**
glaucocladum Stapf & C.E.Hubb., NG
 ***glaucum** (L.) R.Br., SE
 (*P. albicauda* Stapf & C.E.Hubb.)
macrourum Trin., NG, NE [housed at SRGH]

PEROTIS Aiton

- leptopus** Pilg., NG, C, SE, KW
patens Gand., GH, NG, C, KGT, KW
vaginata Hack., NG

PHRAGMITES Adans.

- australis** (Cav.) Steud., NG, C, CH, KW
 (*P. communis* Trin.)
communis Trin. = **P. australis**
mauritanus Kunth, C, CH, NE, NG, SE

POGONARTHRIA Stapf

- fleckii** (Hack.) Hack., NG, KW, SE, C, GH
squarrosa (Roem. & Schult.) Pilg., C, CH, KGL, KGT, KW,
 NE, NG

POLYPOGON Desf.

- ***monspeliensis** (L.) Desf., NG

PSEUDOBRACHIARIA Launert

- deflexa* (Schumach.) Launert = **Brachiaria deflexa**

PSILOCHLOA Launert

- pilgeriana* (Schweick.) Launert = **Panicum pilgerianum**

RHYNCHELYTRUM Nees

- bellespicatum* (Rendle) Stapf & C.E.Hubb. = **Melinis**
longiseta subsp. **bellespicata**
brevipilum (Hack.) Chiov. = **Melinis repens** subsp.
grandiflora
costatum Stapf & C.E.Hubb. = **Melinis repens** subsp.
grandiflora
grandiflorum Hochst. = **Melinis repens** subsp. **grandiflora**
kallimorphon Clayton = **Melinis kallimorpha**
nerviglume (Franch.) Chiov. = **Melinis nerviglumis**
nyassanum (Mez) Stapf & C.E.Hubb. = **Melinis nerviglumis**
ramosum Stapf & C.E.Hubb. = **Melinis nerviglumis**
repens (Willd.) C.E.Hubb. = **Melinis repens** subsp. **repens**
rhodesianum (Rendle) Stapf & C.E.Hubb. = **Melinis**
nerviglumis
setifolium (Stapf) Chiov. = **Melinis nerviglumis**
suberostratum Stapf & C.E.Hubb. = **Melinis repens** subsp.
grandiflora
villosum (Parl.) Chiov. = **Melinis repens** subsp. **grandiflora**

ROTTBOELLIA L.f.

- cochinchinensis** (Lour.) Clayton, C, NE, CH
 (*R. exaltata* L.f.)
compressa L.f. var. *fasciculata* (Lam.) Hack. = **Hemarthria**
altissima
exaltata L.f. = **R. cochinchinensis**

SACCIOLEPIS Nash

- africana** C.E.Hubb. & Snowden, NG

cinereo-vestita (Pilg.) C.E.Hubb. = **S. typhura**

cymbiandra auct. non Stapf = **S. interrupta**

glaucescens Stapf = **S. typhura**

interrupta (Willd.) Stapf, NG

(*S. cymbiandra* auct. non Stapf)

typhura (Stapf) Stapf, NG

(*S. cinereo-vestita* (Pilg.) C.E.Hubb.)

(*S. glaucescens* Stapf)

SARTIDA

angolensis (C.E.Hubb.) De Winter, KGL, SE, C, KW, GH, S,
 CH, NG

(*Aristida angolensis* C.E.Hubb.)

jucunda (Schweick.) De Winter, KGL, SE, C, KW, GH, S,
 CH, NG

(*Aristida jucunda* Schweick.)

SCHISMUS P. Beauv.

barbatus (Loefl. ex L.) Thell., SE

SCHIZACHYRIUM Nees

exile (Hochst.) Pilg., NG

(*S. glabrescens* (Rendle) Stapf)

(*S. inclusum* Stent)

glabrescens (Rendle) Stapf = **S. exile**

inclusum Stent = **S. exile**

jeffreysii (Hack.) Stapf, SE, C, KGL, CH, NG

sanguineum (Retz.) Alston, NG, S, KW, C, CH, SE

(*S. semiberbe* Nees)

semiberbe Nees = **S. sanguineum**

SCHMIDTIA Steud. ex J.A.Schmidt

bulbosa Stapf = **S. pappophoroides**

kalahariensis Stent, NG, KGL, SE, GH

pappophoroides Steud., NG, KGL, KGT, KW, CH., GH,
 SE, C

(*S. bulbosa* Stapf)

SEHIMA Forssk.

ischaemoides Forssk., NG

SETARIA

almaspicata de Wit = **S. sphacelata** var. **sericea**

anceps Stapf ex R.L.Massey = **S. sphacelata** var. **sericea**

cana de Wit = **S. sphacelata** var. **sericea**

decipiens de Wit = **S. sphacelata** var. **sphacelata**

eylesii Stapf & C.E.Hubb. = **S. incrassata**

flabellata Stapf = **S. sphacelata** var. **sphacelata**

flabelliformis de Wit = **S. sphacelata** var. **sericea**

gerrardii Stapf = **S. incrassata**

holstii R.A.W.Herrm. = **S. incrassata**

homonyma (Steud.) Chiov. CH

incrassata (Hochst.) Hack., KGL, C

(*S. eylesii* Stapf & C.E.Hubb.)

(*S. gerrardii* Stapf)

(*S. holstii* R.A.W.Herrm.)

(*S. pabularis* Stapf)

(*S. palustris* Stapf)

(*S. perberbis* de Wit)

(*S. phragmitoides* Stapf)

(*S. porphyrantha* Stapf)

(*S. rudifolia* Stapf)

(*S. woodii* Hack. subsp. *bechuanica* de Wit)

(*S. woodii* Hack. var. *fonssalutis* de Wit)

(*S. woodii* Hack. var. *woodii*)

lindenbergiana (Nees) Stapf, NG

(*S. phillipsii* de Wit)

neglecta de Wit = **S. sphacelata** var. **sphacelata**

pabularis Stapf = **S. incrassata**

palustris Stapf = **S. incrassata**

perberis de Wit = **S. incrassata**

perennis Hack. = **S. sphacelata** var. **sphacelata**

phillipsii de Wit = **S. lindenbergiana**

phragmitoides Stapf = **S. incrassata**

porphyrantha Stapf = **S. incrassata**

pseudaristata (Peter) Pilg., NG

(*S. tenuiseta* de Wit)

pallide-fusca (Schumach.) Stapf & C.E.Hubb. = **S. pumila**

pumila (Poir.) Roem. & Schult., NG, SE

(*S. pallide-fusca* (Schumach.) Stapf & C.E.Hubb.)

(*S. ustilata* de Wit)

rudifolia Stapf = **S. incrassata**

sagittifolia (A.Rich.) Walp., NG, C

(*Cymbosetaria sagittifolia* (A.Rich.) Schweick.)

sphacelata (Schumach.) Moss var. **sericea** (Stapf) Clayton,

CH, NG [housed at PRE]

(*S. almaspicata* de Wit)

(*S. anceps* Stapf ex R.L.Massey)

(*S. cana* de Wit)

(*S. flabelliformis* de Wit)

(*S. sphacelata* (Schumach.) Moss subsp. *nodosa* de Wit)

(*S. sphacelata* (Schumach.) Moss subsp. *pyropea* de Wit)

sphacelata (Schumach.) Moss var. subsp. *nodosa* de Wit = **S.**

sphacelata var. **sericea**

sphacelata (Schumach.) Moss var. subsp. *pyropea* de Wit = **S.**

sphacelata var. **sericea**

sphacelata (Schumach.) Moss subsp. *aquamontana* de Wit =

S. sphacelata var. **sphacelata**

sphacelata (Schumach.) Moss var. *stolonifera* de Wit = **S.**

sphacelata var. **sphacelata**

sphacelata (Schumach.) Moss var. **sphacelata**, NG, SE, CH

(*S. decipiens* de Wit)

(*S. flabellata* Stapf)

(*S. neglecta* de Wit)

(*S. perennis* Hack.)

(*S. sphacelata* (Schumach.) Moss subsp. *aquamontana* de Wit)

(*S. sphacelata* (Schumach.) Moss var. *stolonifera* de Wit)

(*S. stenantha* Stapf)

sphacelata (Schumach.) Moss var. **torta** (Stapf) Clayton, NG

[housed at PRE]

(*S. torta* Stapf)

stenantha Stapf = **S. sphacelata** var. **sphacelata**

tenuiseta de Wit = **S. pseudaristata**

torta Stapf = **S. sphacelata** var. **torta**

ustilata de Wit = **S. pumila**

verticillata (L.) P.Beauv., GH, NG, KW, C

woodii Hack. subsp. *bechuanica* de Wit = **S. incrassata**

woodii Hack. subsp. *fonssalutis* de Wit = **S. incrassata**

woodii Hack. var. *woodii* = **S. incrassata**

SORGHASTRUM Nash

friesii (Pilg.) Pilg. = **S. nudipes**

nudipes Nash, NG

(*S. friesii* (Pilg.) Pilg.)

SORGHUM Moench

almum Parodi = **S. halepense**

arudinaceum (Desv.) Stapf, SE, NG

(*S. verticilliflorum* (Steud.) Stapf)

***halepense** (L.) Pers., CH, NG, SE

(*S. almum* Parodi)

versicolor Andersson, C, KGL

verticilliflorum (Steud.) Stapf = **S. arudinaceum**

SPOROBOLUS R.Br.

acinifolius Stapf, NG, S, KW, KGL, CH

africanus (Poir.) Robyns & Tournay, NG

(*S. capensis* (Willd.) Kunth)

albicans (Nees ex Trin.) Nees, NG

bechuanicus Gooss., C, KW, KGL

capensis (Willd.) Kunth = **S. africanus**

consimilis Fresen., NG

(*S. robustus* auct. non Kunth)

cordofanus (Steud.) Coss, NG

coromandelianus (Retz.) Kunth, NG, KGL

(*S. argutus* (Nees) Kunth)

(*S. pyramidatus* auct. non (Lam.) Hitchc.)

festivus A.Rich., C, SE, NE, NG

(*S. festivus* A.Rich. var. *fibrosus* Stent)

festivus A.Rich. var. *fibrosus* Stent = **S. festivus**

fimbriatus (Trin.) Nees, SE, S, KGL, C, NG, KW

(*S. fimbriatus* (Trin.) Nees var. *latifolius* Stent)

fimbriatus (Trin.) Nees var. *latifolius* Stent = **S. fimbriatus**

ioclados (Trin.) Nees, C, KGL, NG, KW, NE

(*S. ioclados* (Trin.) Nees var. *usitatus* (Stent) Chippind.)

(*S. kentrophyllus* (K.Schum.) Clayton)

(*S. marginatus* Hochst. ex A.Rich.)

(*S. smutsii* Stent)

(*S. usitatus* Stent)

ioclados (Trin.) Nees var. *usitatus* (Stent) Chippind. = **S.**

ioclados

kentrophyllus (K.Schum.) Clayton = **S. ioclados**

ludwigii Hochst., NG

macranthelus Chiov., NG

marginatus Hochst. ex A.Rich. = **S. ioclados**

myrianthus Benth., NG [housed at SRGH]

natalensis (Steud.) T.Durand & Schinz, NG

nitens Stent, KW, NG

panicoides A.Rich., CH, C, NG

paniculatus (Trin.) T.Durand & Schinz, NG [housed at K]

pyramidalis P.Beauv., CH, NG

pyramidatus auct. non (Lam.) Hitchc. = **S. coromandelianus**

rangei Pilg., KGL, NG

robustus auct. non Kunth = **S. consimilis**

salsus Mez., NG

smutsii Stent = **S. ioclados**

spicatus (Vahl) Kunth, NG

stapfianus Gand., NG

tenellus (Spreng.) Kunth, NG

usitatus Stent = **S. ioclados**

STEREOCHLAENA Hack.

cameronii (Stapf) Pilg., C

STIPAGROSTIS Nees

amabilis (Schweick.) De Winter, KGL, C, KW, GH, NG
(*Aristida amabilis* Schweick.)

ciliata (Desf.) De Winter var. **capensis** (Trin. & Rupr.) De Winter, KGL, SE, C, KW, GH, S, CH, NG
(*Aristida ciliata* Desf.)

(*Aristida ciliata* Desf. var. *capensis* Trin. & Rupr.)

(*Aristida ciliata* Desf. var. *pectinata* Henrard)

(*Aristida ciliata* Desf. var. *tricholaena* Hack.)

(*Aristida ciliata* Desf. var. *villosa* Hack.)

hirtigluma (Trin. & Rupr.) De Winter subsp. **hirtigluma**, GH, KGL, SE, C, KW, S, CH, NG [housed at SRGH]

(*Aristida hirtigluma* Trin. & Rupr.)

hirtigluma (Trin. & Rupr.) De Winter subsp. **patula** (Hack.) De Winter, KGL, SE, C, KW, GH, S, CH, NG

(*Aristida gracilior* Pilg. var. *gracilior*)

namaquensis (Nees) De Winter, KGL, SE, C, KW, GH, S, CH, NG

(*Aristida namaquensis* (Nees) Trin. & Rupr.)

obtusa (Delile) Nees, KGL, SE, C, KW, GH, S, CH, NG
(*Aristida obtusa* Delile)

uniplumis (Licht.) De Winter var. **neesii** (Trin. & Rupr.) De Winter, G, KW, KGL, NG, C, SE.

(*Aristida uniplumis* Licht. var. *neesii* Trin. & Rupr.)

uniplumis (Licht.) De Winter var. **uniplumis**, KGL, SE, C, KW, GH, S, CH, NG

(*Aristida uniplumis* Licht. var. *pearsonii* Henrard)

(*Aristida uniplumis* Licht. var. *uniplumis*)

THEMEDA Forssk.

triandra Forssk., NG, CH, C

TRACHYPOGON Nees

spicatus (L.f.) Kuntze, NG

TRAGUS Haller

berteronianus Schult., NG, KGT, SE, C, KW, KGL

koelerioides Asch., NG

pedunculatus Pilg., NG

racemosus (L.) All., NG

TRICHOLAENA Schrad. in Schult.

monachne (Trin.) Stapf & C.E.Hubb., GH, C, KGL, SE, NG, KW

(*T. monachne* (Trin.) Stapf & C.E.Hubb. var. *annua* J.G.Anderson)

monachne (Trin.) Stapf & C.E.Hubb. var. *annua* J.G.Anderson = **T. monachne**

TRICHONEURA Andersson

grandiglumis (Nees) Ekman, S, C, SE, NE

(*T. grandiglumis* (Nees) Ekman var. *grandiglumis*)

(*T. grandiglumis* (Nees) Ekman var. *minor* (Rendle) Chippind.)

grandiglumis (Nees) Ekman var. *grandiglumis* = **T.**

grandiglumis

grandiglumis (Nees) Ekman var. *minor* (Rendle) Chippind. =

T. grandiglumis

TRIPOGON Roem. & Schult.

abyssinicus auct. non Nees ex Steud. = **T. minimus**

minimus (A.Rich.) Steud., C, SE

(*T. abyssinicus* auct. non Nees ex Steud.)

TRIRAPHIS R.Br.

andropogonoides (Steud.) E.Phillips, S, KW

fleckii Hack. = **T. purpurea**

purpurea Hack., KW, C, KGL, S

(*T. fleckii* Hack.)

schinzii Hack. KW, C, CH, S, KGL, NG

(*T. schlechteri* Pilg. ex Stent)

schlechteri Pilg. ex Stent = **T. schinzii**

TRISTACHYA Nees

eylesii Stent & J.M.Ratttray = **T. nodiglumis**

hitchcockii (C.E.Hubb.) Conert = **T. lualabaensis**

longispiculata C.E.Hubb. = **T. nodiglumis**

lualabaensis (De Wild.) J.B.Phipps, NG

(*T. hitchcockii* (C.E.Hubb.) Conert)

nodiglumis K.Schum., NG

(*Dolichochoete longispiculata* (C.E.Hubb.) J.B.Phipps)

(*Dolichochoete nodiglumis* (K.Schum.) J.B.Phipps)

(*T. eylesii* Stent & J.M.Ratttray)

(*T. longispiculata* C.E.Hubb.)

rehmannii Hack., NG

(*Dolichochoete rehmannii* (Hack.) J.B.Phipps var. *pilosa*

(C.E.Hubb.) J.B.Phipps)

superba (De Not.) Schweinf. & Asch., NG

(*Loudetia superba* De Not)

URELYTRUM Hack.

agropyroides (Hack.) Hack., S

(*U. squarrosum* Hack.)

squarrosum Hack. = **U. agropyroides**

UROCHLOA P.Beauv.

bolbodes (Steud.) Stapf = **U. oligotricha**

brachyura (Hack.) Stapf, KGL, SE, C, KW, GH

engleri Pilg. = **U. trichopus**

mosambicensis (Hack.) Dandy, C, KGL, KW, NG, CH

(*U. pullulans* Stapf)

(*U. rhodesiensis* Stent)

oligotricha (Fig. & De Not.) Henrard, KW, SE, NG, C, KGL

(*U. bolbodes* (Steud.) Stapf)

panicoides P.Beauv., NG, SE

(*U. ruschii* Pilg.)

pullulans Stapf = **U. mosambicensis**

rhodesiensis Stent = **U. mosambicensis**

ruschii Pilg. = **U. panicoides**

stolonifera (Gooss.) Chippind., KW

trichopus (Hochst.) Stapf, C, NG, SE, KGL

(*U. engleri* Pilg.)

VETIVERIA Bory

nigritana (Benth.) Stapf = **Chrysopogon nigritanus**

VOSSIA Wall. & Griff.

cuspidata (Roxb.) Griff., NG, CH

WILLKOMMIA Hack.

sarmentosa Hack., NG

(*Craspedorhachis sarmentosa* (Hack.) Pilg.)

References

- BRUMMIT, R.K. 1992. *Vascular plant families and genera*. Royal Botanic Gardens, Kew.
- BRUMMIT, R.K. & POWELL, C.E. (eds) 1992. *Authors of plant names*. Royal Botanic Gardens, Kew.
- CHAPANO, C. 2002. A checklist of Zimbabwean grasses. *Southern African Botanical Diversity Network Report No. 16*. SABONET, Pretoria and Harare.
- SETSHOGO, M.P. 2004. A checklist of Botswana plants (including Bryophytes and Pteridophytes). *Southern African Botanical Diversity Network Report*. SABONET, Pretoria and Gaborone.



Index

A

Acrachne 4
 Acroceras 4
 Alloteropsis 4
 Andropogon 4
 Anthephora 4
 Aristida 4
 Arundo 5
Asthenatherum 5
Avenastrum 5

B

Bewsia 5
 Bothriochloa 5
 Brachiaria 5
 Brachyachne 5

C

Cenchrus 5
 Centropodia 5
Chaetaria 5
 Chloris 5
 Chrysopogon 5
 Coelachyrum 5
 Craspedorhachis 6
 Cymbopogon 6
Cymbosetaria 6
 Cynodon 6
Cypholepis 6

D

Dactyloctenium 6
Danthonia 6
 Danthoniopsis 6
Diandrochloa 6
 Dichanthium 6
Diectomis 6
 Digitaria 6
Digitarialla 7
 Diheteropogon 7
 Dinebra 7
Diplachne 7
Dolichochaete 7

E

Echinochloa 7
 Eleusine 7
 Elionurus 7
 Elymandra 7
 Elytrophorus 7

Enneapogon 7
 Enteropogon 7
 Entolasia 8
 Eragrostis 8
 Eriochloa 8
 Eulalia 8
 Eustachys 8

F

Fingerhuthia 9

H

Hackelochloa 9
 Hemarthria 9
 Hyparrhenia 9
 Hyperthelia 9

I

Imperata 9
 Ischaemum 9

L

Leersia 9
 Leptocarydion 9
 Leptochloa 9
 Lintonia 9
 Loudetia 9

M

Megaloprotachne 9
 Melinis 9
 Microchloa 10
Miscanthidium 10
 Miscanthus 10
 Monocymbium 10

O

Odyssea 10
 Oplismenus 10
 Oryza 10
 Oryzidium 10

P

Panicum 10
 Paspalidium 10
 Paspalum 10
 Perotis 11
 Phragmites 11
 Pogonarthria 11
 Polypogon 11

Pseudobrachiaria 11
Psilochloa 11

R

Rhynchelytrum 11
Rottboellia 11

S

Sacciolepis 11
Sartida 11
Schismus 11
Schizachyrium 11
Schmidtia 11
Sehima 11
Setaria 11
Sorghastrum 12
Sorghum 12
Sporobolus 12
Stereochlaena 12
Stipagrostis 13

T

Themeda 13
Trachypogon 13
Tragus 13
Tricholaena 13
Trichoneura 13
Tripogon 13
Triraphis 13
Tristachya 13

U

Urochloa 13

V

Vetiveria 13
Vossia 13

W

Willkommia 13

National Herbarium (GAB) and National Botanic Garden

The National Herbarium (GAB) and National Botanic Garden is conveniently located in the Village, the oldest historically important part of Gaborone, on Plot 17991, Okwa Road (opposite the Gaborone Club in the Village).

Opening Hours

Monday–Friday
7:30 am–4:30 pm

Postal address

Botswana National Museum
National Herbarium
Private Bag 00114
Gaborone
Botswana
Tel: 267-39 73860/39 74616
Fax: 267-39 11186/39 02797
gabherbarium@botsnet.bw
national.museum@gov.bw

Administration

The Natural History Division of the Botswana National Museum is administered by the Department of Botswana National Museum in the Ministry of Labour and Home Affairs.

Mandate

The Natural History Division of the Botswana National Museum consists of five units: Botany (National Herbarium and Botanic Garden), Zoology (Entomology & Vertebrates), Geology, Taxidermy, and Monuments.

The National Herbarium and Botanic Garden is a centre for research and information on indigenous plants of Botswana. It is responsible for the promotion of the conservation development and sustainable use of the Botswana flora.

The National Herbarium houses preserved plants specimens while the Botanic Garden deals with living collections.

The Education Division of Botswana National Museum disseminates information on the plants of Botswana to educational institutions, such as schools, the University of Botswana, and the Botswana College of Agriculture.

Aims

- To conserve, enhance and create Botswana's principal collection of botanical specimens for national and international reference and study.
- To do scientific research and documentation on the Botswana flora.
- To provide botanical information to government Departments, NGOs, researchers, students, and the public.
- To promote awareness in plant conservation with the aim of preserving endangered and rare species.
- To locate rare and endangered species, in order to develop management strategies for their conservation.

Staff

Dr Bruce Hargreaves: bhargreaves@gov.bw
Mr Nonfo Mosesane: nmosesane@gov.bw
Mrs Queen Turner : turnerq@hotmail.com
Mr Daniel Mafokate: dmafokate@gov.bw
Mr Diphetogo Menyatso: dmenyatso@gov.bw
Ms Monicah Kabelo: mjlabelo@yahoo.co.uk
Ms Matshwenyego Stephen: mstephen@gov.bw

Other herbaria in Botswana

University of Botswana Herbarium (UCBG)

Contact person: setshogo@mopipi.ub.bw

Harry Oppenheimer Okavango Research Centre (PSUB)

Ngamiland District, Maun

Contact person: bsethebe@orc.ub.bw

Sebele Herbarium

Contact person: tofentse@gov.bw

About SABONET

This publication is a product of the Southern African Botanical Diversity Network (SABONET), a programme aimed at strengthening the level of botanical expertise, expanding and improving herbarium and botanic garden collections, and fostering closer collaborative links among botanists in the southern African subcontinent.

The main objective of SABONET is to develop a strong core of professional botanists, taxonomists, horticulturists, and plant diversity specialists within the ten countries of southern Africa (Angola, Botswana, Lesotho, Malawi, Mozambique, Namibia, South Africa, Swaziland, Zambia and Zimbabwe). This core group will be competent to inventory, monitor, evaluate, and conserve the botanical diversity of the region in the face of specific development challenges, and to respond to the technical and scientific needs of the Convention on Biological Diversity.

To enhance the human resource capacity and infrastructure available in the region, SABONET offers training courses, workshops, and collaborative expeditions in under-collected areas. The programme produces a newsletter, SABONET News, and a series of occasional publications, the Southern African Botanical Diversity Network Report Series, of which this publication is part.

SABONET is co-funded by:

- The United States Agency for International Development (USAID/World Conservation Union—Regional Office for southern Africa (IUCN-ROSA))
- The Global Environment Facility (GEF)/United Nations Development Programme (UNDP)

For more information about our projects in southern Africa contact one of the following addresses:

General enquiries about SABONET

SABONET Coordinator
c/o National Botanical Institute
Private Bag X101
Pretoria 0001
South Africa
Tel: (27) 12 804 3200
Fax: (27) 12 804 3211/5979
E-mail: info@sabonet.org
<http://www.sabonet.org>

ANGOLA

Luanda Herbarium
(Prof. Esperança Costa)
Universidade Agostinho Neto
Rua Fernando Pessoa No. 103
Villa Alice
Caixa Postal 3244
Tel: (244) 2 336 168
Fax: (244) 2 336 168
E-mail: esperancacosta@yahoo.com

BOTSWANA

National Herbarium
(Mr Nonfo Mosesane)
Private Bag 00114
Gaborone
Tel: (267) 39 73860/39 74616
Fax: (267) 39 11186/39 02797
E-mail: nmosesane@gov.bw

LESOTHO

National Environment Secretariat
(Mr Thulo Qhotsokoane)
Ministry of Environment
Private Bag A23
Maseru 100
Tel: (266) 311 767
Fax: (266) 310 506/321505
E-mail: tghotsokoane@ilesotho.com

MALAWI

National Herbarium and Botanic
Gardens of Malawi
(Dr Zacharia Magombo)
P.O. Box 528
Zomba
Tel: (265) 525 388/118/145
Fax: (265) 524164/108
E-mail: zlmagombo@hotmail.com

MOZAMBIQUE

LMA Herbarium (Mr Calane da Silva)
Instituto Nacional de Investigação
Agronómica
Caixa Postal 3658
Mavalane
Maputo
Tel: (258) 1 460 255/130/190/097
Fax: (258) 1 460 074
E-mail: depbotan@zebra.uem.mz

NAMIBIA

National Herbarium
(Dr Gillian Maggs-Kölling)
National Botanical Research Institute
Private Bag 13184
Windhoek
Tel: (264) 61 202 2020
Fax: (264) 61 258 153
E-mail: gmk@mweb.com.na

SOUTH AFRICA

National Herbarium
(Prof. Gideon Smith)
National Botanical Institute
Private Bag X101
Pretoria 0001
Tel: (27) 12 804 3200
Fax: (27) 12 804 3211/5343
E-mail: gfs@nbipre.nbi.ac.za

SWAZILAND

National Herbarium
(Mr Gideon Dlamini)
Malkerns Agricultural Research Station
P.O. Box 4
Malkerns
Tel: (268) 52 82111/83017/83038
Fax: (268) 52 83360/83490
E-mail: sdnh@africaonline.co.sz

ZAMBIA

Herbarium (Dr Patrick Phiri)
Department of Biological Sciences
University of Zambia
P.O. Box 32379
Lusaka
Tel: (260) 1 293 158
Fax: (260) 1 294806/253952
E-mail: Pphiri@natsci.unza.zm

ZIMBABWE

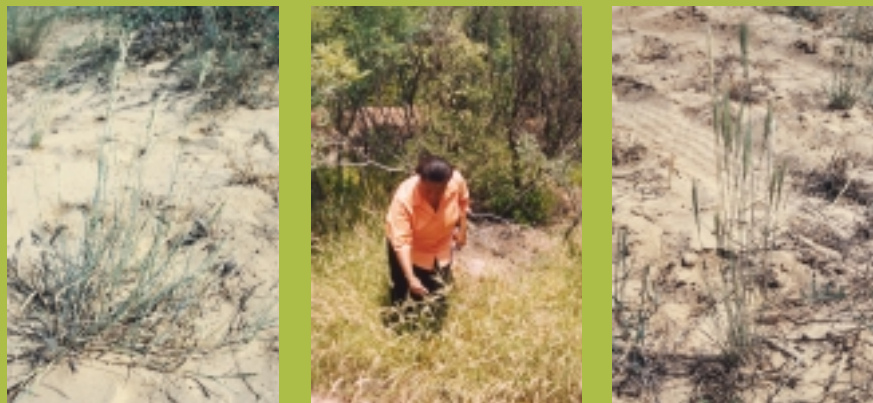
National Herbarium and Botanic
Garden
(Ms Nozipo Nobanda)
P.O. Box A889
Avondale
Harare
Tel: (263) 4 708 938/744170/745230
Fax: (263) 4 708 938
E-mail: srgh@mweb.co.zw

Other publications in this series

1. ***Southern African national herbaria: status reports, 1996.** C.K. Willis (ed.). 1997. 59 pp. ISBN 1-874907-36-6.
2. ***Index herbariorum: southern African supplement.** G.F. Smith & C.K. Willis (eds). 1997. 55 pp. ISBN 1-874907-37-4.
3. ***PRECIS Specimen database user guide.** C.A. Prentice & T.H. Arnold. 1998. 130 pp. ISBN 1-874907-39-0.
4. ***↓Inventory, evaluation and monitoring of botanical diversity in southern Africa: a regional capacity and institution building network (SABONET).** B.J. Huntley, E.M. Matos, T.T. Aye, U. Nermark, C.R. Nagendran, J.H. Seyani, M.A.C. da Silva, S. Izidine, G.L. Maggs, C. Mannheimer, R. Kubirske, G.F. Smith, M. Koekemoer, G.M. Dlamini, P.S.M. Phiri, N. Nobanda & C.K. Willis. 1998. 73 pp. ISBN 1-919795-36-7.
5. ***Plant taxonomic and related projects in southern Africa.** T.H. Arnold & M. Mössmer (compilers). 1998. 101 pp. ISBN 1-919795-34-0.
6. ***↓Southern African herbarium needs assessment.** G.F. Smith, C.K. Willis & M. Mössmer. 1999. 88 pp. ISBN 1-919795-45-6.
7. ***A checklist of Namibian plant species.** P. Craven (ed.). 1999. 206 pp. ISBN 1-919795-37-5.
8. **↓Index herbariorum: southern African supplement.** Second edition. G.F. Smith & C.K. Willis. 1999. 181 pp. ISBN 1-919795-47-2.
9. ***Making your garden come alive! Environmental interpretation in botanical gardens.** M.Honig. 2000. 96 pp. ISBN 1-919795-50-2.
10. **↓Plant taxonomic expertise: An inventory for southern Africa.** M. Mössmer & C.K. Willis. 2000. 350 pp. ISBN 1-919795-53-7.
11. ***Southern African botanical gardens needs assessment.** D.J. Botha, C.K. Willis & J.H.S. Winter. 2000. 156 pp. ISBN 1-919795-54-5.
12. ***Action plan for southern African botanical gardens.** C.K. Willis & S. Turner (eds). 2001. 35 pp. ISBN 1-919795-61-8.
13. **Conspectus of southern African Pteridophyta.** J.P. Roux. 2001. 223 pp. ISBN 1-919795-58-8.
14. ***Southern African plant Red Data Lists.** J.S. Golding (ed.). 2002. 256 pp. ISBN 1-919795-64-2.
15. ***Addressing the needs of the users of botanical information.** Y. Steenkamp & G.F. Smith. 2002. 56 pp. ISBN 1-919795-65-0.
16. ***A checklist of Zimbabwean grasses.** C. Chapano. 2002. 28 pp. ISBN 1-919795-66-9.
17. ***A checklist of Lesotho grasses.** K. Kobisi & L.E. Kose. 2002. 28 pp. ISBN 1-919795-68-5.
18. **Trees of Botswana: names and distribution.** M.P. Setshogo & F. Venter. 2003. 160 pp. ISBN 1-919795-69-3.
19. ***Swaziland ferns and fern allies.** J.P. Roux. 2003. 242 pp. ISBN 1-919795-97-9.
20. **Checklist of grasses in Namibia.** E.S.Klaassen & P. Craven. 2003. 130 pp. ISBN 99916-63-16-9.
21. **A checklist of Zimbabwean bryophytes.** P. Manyanga & S.M. Perold. 2004. 22 pp. ISBN 1-919976-02-7.
22. **African Botanic Gardens Congress 'Partnerships and Linkages': proceedings of a congress held at Durban Botanic Gardens, South Africa, 24–29 November 2002. / Congrès des Jardins Botaniques Africains 'Relations et Partenariats': compte rendu d'un congrès tenu dans les Jardins Botaniques de Durban, Afrique du Sud, 24–29 Novembre 2002.** C.K. Willis (ed.). 2004. 96 + 96 pp. ISBN 1-919976-04-3.
23. **Integration of Red Data List concepts into the policy framework in Mozambique: proceedings of a workshop held in Kaya-Kwanga, Maputo, Mozambique, 29–31 August 2001.** S.A. Izidine, I. Nhantumbo & J. Golding (eds). 2004. 19 + 19 pp. ISBN 1-919976-05-1.

* Out of print.

↓ Available in PDF format on the SABONET web site: <http://www.sabonet.org/publications/download.htm>
Most of the books in this series can also be ordered in PDF format on CD. Contact sabonetpub@nbi.ac.za



For any enquiries about the grasses of Botswana contact:

Botswana National Museum
National Herbarium
Private Bag 00114
Gaborone
Botswana

Tel: (267) 39 73860/39 74616
Fax: (267) 39 11186/39 02797